

Grannitto

غرانيتو
Grannitto

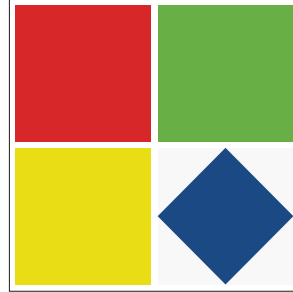
شركة
سيراميك الخليج
Al Khaleej Ceramics
Co. L.L.C



CATALOGUE 2023

www.grannitto.com

شركة
سيراميك الخليج
Al Khaleej Ceramics
Co. L.L.C



DUBAI-UAE
Dubai Industrial City
Saih Shuaib 3, 87044



info@grannitto.com
www.grannitto.com



Tel : +971 4 241 6555
Fax : +971 4 459 9910



www.grannitto.com

ABOUT US

Al Khaleej Ceramics Co. LLC, Grannitto, is one of the pioneers in manufacturing porcelain tiles in the GCC. Commenced Operation in 1994 Al Khaleej Ceramics, **Grannitto**, has gained high goodwill in the Building Material & Construction Industry not only in the UAE, but also worldwide. Al Khaleej Ceramics Co. LLC is specialized in manufacturing and distributing high quality porcelain tiles. We strive to produce tiles with distinctive quality and convey high-class customer services with the utmost professionalism.

We are located in Dubai Industrial City with the most modern manufacturing unit. The Brand **Grannitto** is known as the name of trust both in Domestic and International Market. It is one of the fastest growing names in the modern tile industry. We pace to keep up with the customer and market demands which makes us favorite both domestically and internationally.

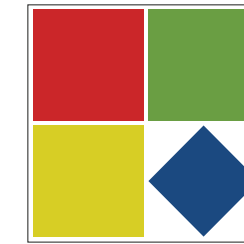
Al Khaleej Ceramics Co. LLC has built a reputation for delivering high-end products. This was made by the implementation of a systematic and comprehensive Quality Management System compatible with global standards. Each employee ensures compliance and adherence to stringent quality policies. The products go through high-quality checks. We set high standards of relationship with our customers, suppliers, distributors and resource partners.

OUR VISION

To become the top name in the tiles industry and maintain the status of a global entity that provides the best solution in manufacturing ceramic and porcelain tiles, that carries the idea of quality, design, and stability, embedded in our brand.

OUR MISSION

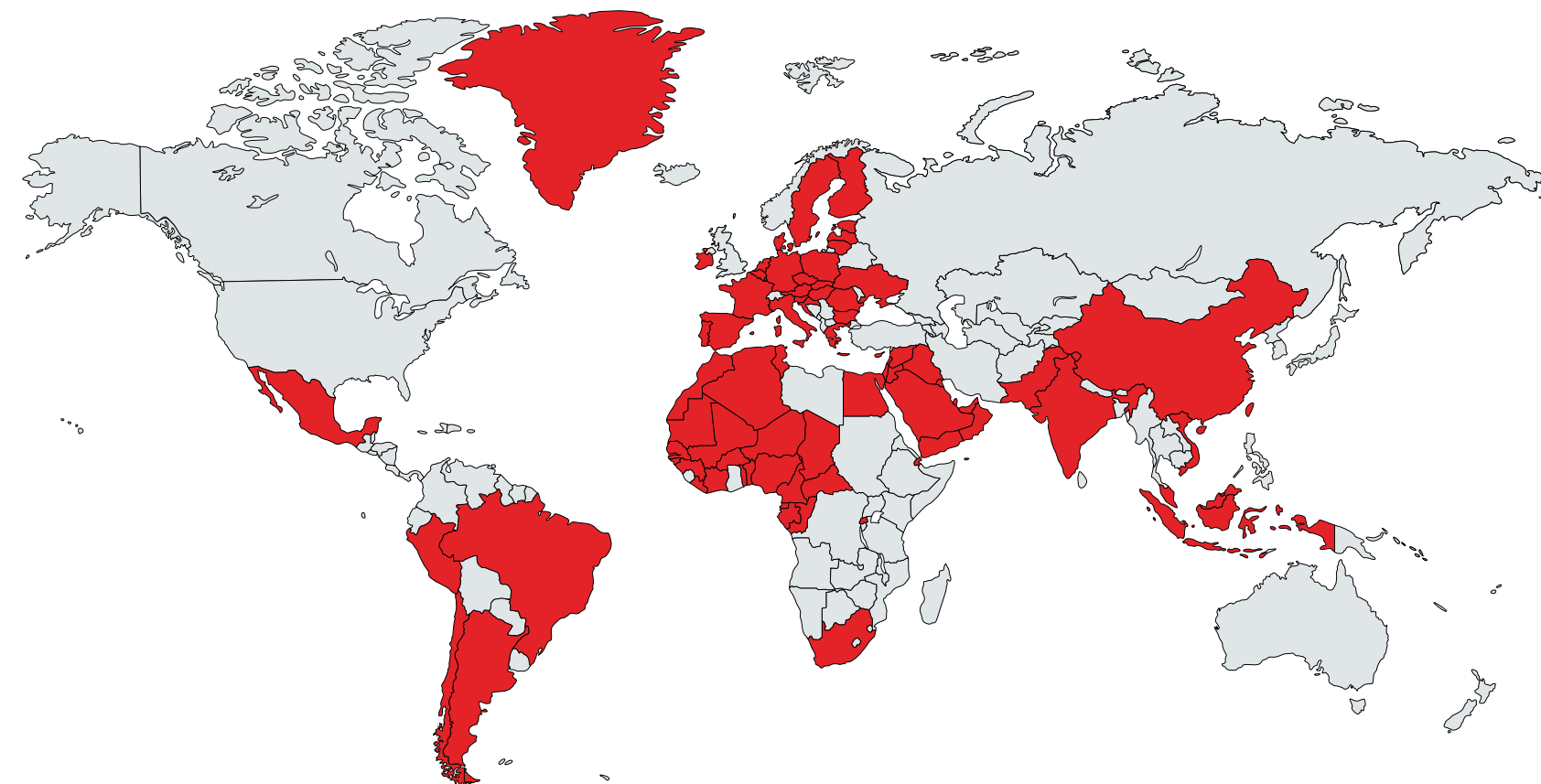
Ensure Customer satisfaction by providing them with the best product and service on their requirements and needs, ensuring value for money. Keep abreast of Global Trends and developments happening within the industry.



شركة
سيراميك الخليج
ش.ذ.م.م
Al Khaleej Ceramics
Co. L.L.C

غرانيطو
Grannitto

WORLDWIDE REGISTERED



MESSAGE FROM OUR CHAIRMAN

“We, Al Khaleej Ceramics, follow our corporate slogan “Beauty and Endurance”.

We pursue our business activities with our core strengths of professionalism and strive to deliver maximum satisfaction to you. Our Business is Tiles Production. Our strength is the Quality of our Product.

Our motivation is our pride in our organization and what it has accomplished throughout the years. Integrity is our foundation; quality and fairness are our goals and caring for our customers is our core objective.

Commitment to excellence and client satisfaction form the basis of our philosophy. Our theme is quality, integrity, time, efficiency and reliability

Our corporate responsibilities include enhancing our awareness, conformity with business ethics and aim to be a reliable and trustworthy company globally. We believe that only outstanding workmanship, superior quality control , strengthening reliability and continuous development of our management profile and professionalism can bring out the desired results and our goal of customer satisfaction.

With Best Wishes and Regards
Eng. Mohamad Al Shihabi

INDEX

ABOUT US 1

WORLDWIDE REGISTERED 2

MESSAGE FORM OUR CHAIRMAN..... 3

INDEX 4

MARBLE 05 - 32

CEMENT 33 - 50

TIMBER 51 - 60

DECORE 61 - 66

COLORE 67 - 72

HEAVY DUTY 73 - 88

TILE CALCULATION 89

PATTERN 90

MAINTENANCE 91

TECHNICAL SPECIFICATIONS 92

CERTIFICATIONS 93 - 94



MARBLE

Symbol of Beauty



M496



M4B6

FINISH
POLISHED | MATT

AVAILABLE SIZES (CM)
60x120 | 60x60 | 30x60

FINISH
POLISHED | MATT

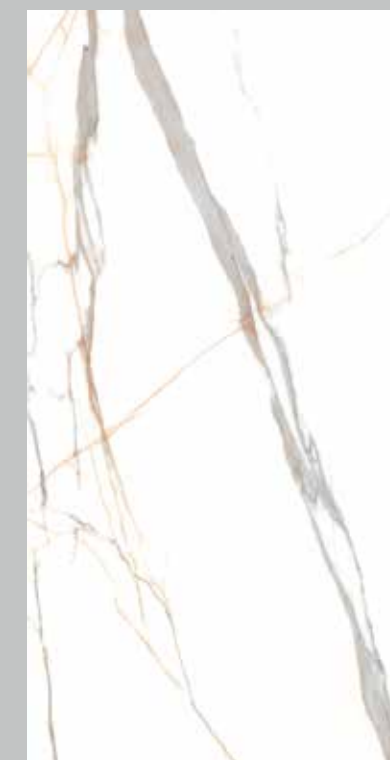
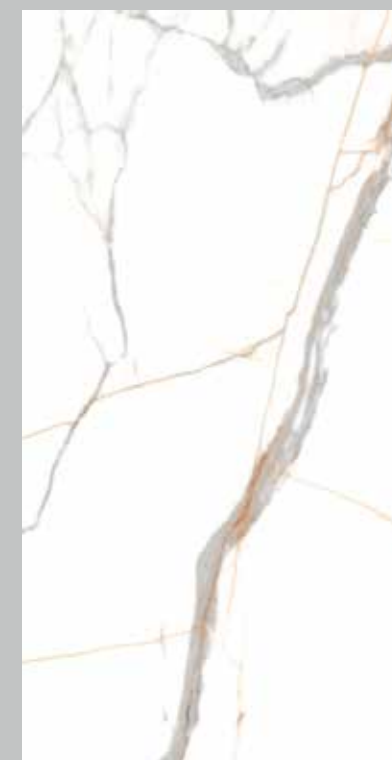
AVAILABLE SIZES (CM)
60x120 | 60x60 | 30x60



M4A7



M4D5



M4D6

FINISH
POLISHED | MATT

AVAILABLE SIZES (CM)
60x120 | 60x60 | 30x60



M4B8



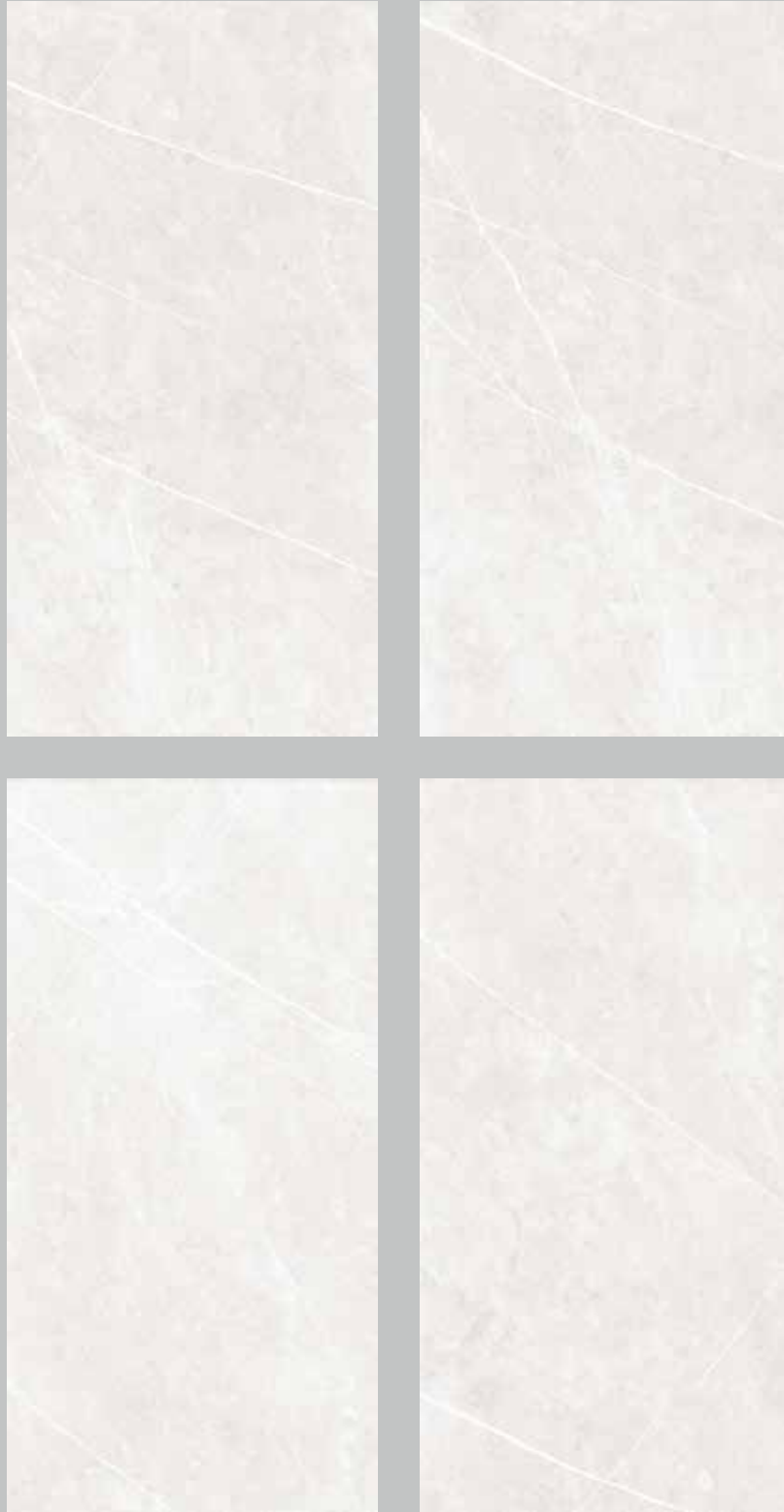
M425



M418



M444



M403

FINISH
POLISHED | MATT

AVAILABLE SIZES (CM)
60x120 | 60x60 | 30x60



M401

FINISH
POLISHED | MATT

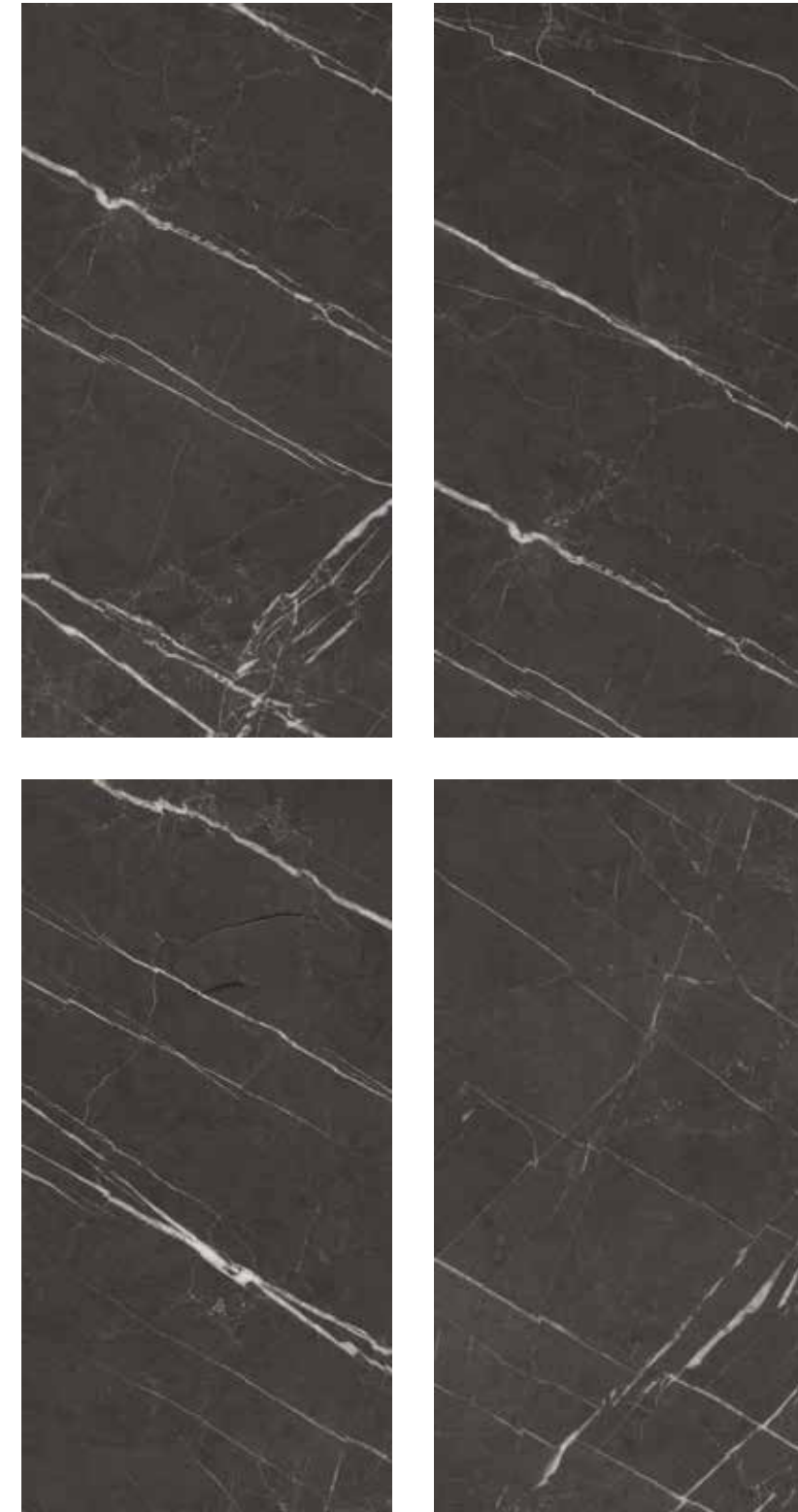
AVAILABLE SIZES (CM)
60x120 | 60x60 | 30x60



M492

FINISH
POLISHED | MATT

AVAILABLE SIZES (CM)
60x120 | 60x60 | 30x60



M421

FINISH
POLISHED | MATT

AVAILABLE SIZES (CM)
60x120 | 60x60 | 30x60



M429



M474



M424



M409



M410



M470



M466



M460



M498

FINISH
POLISHED | MATT

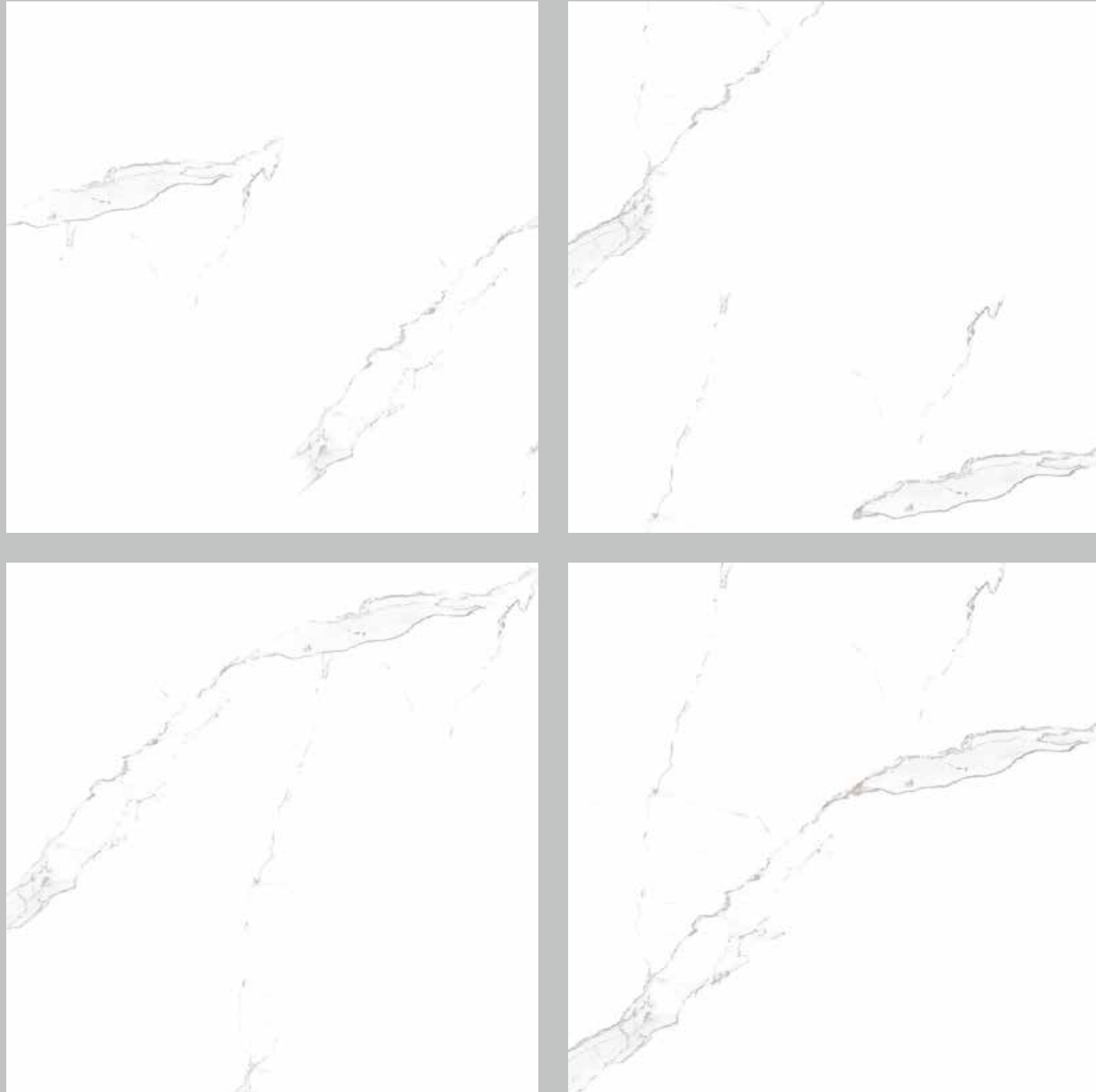
AVAILABLE SIZES (CM)
60x60 | 30x60



M497

FINISH
POLISHED | MATT

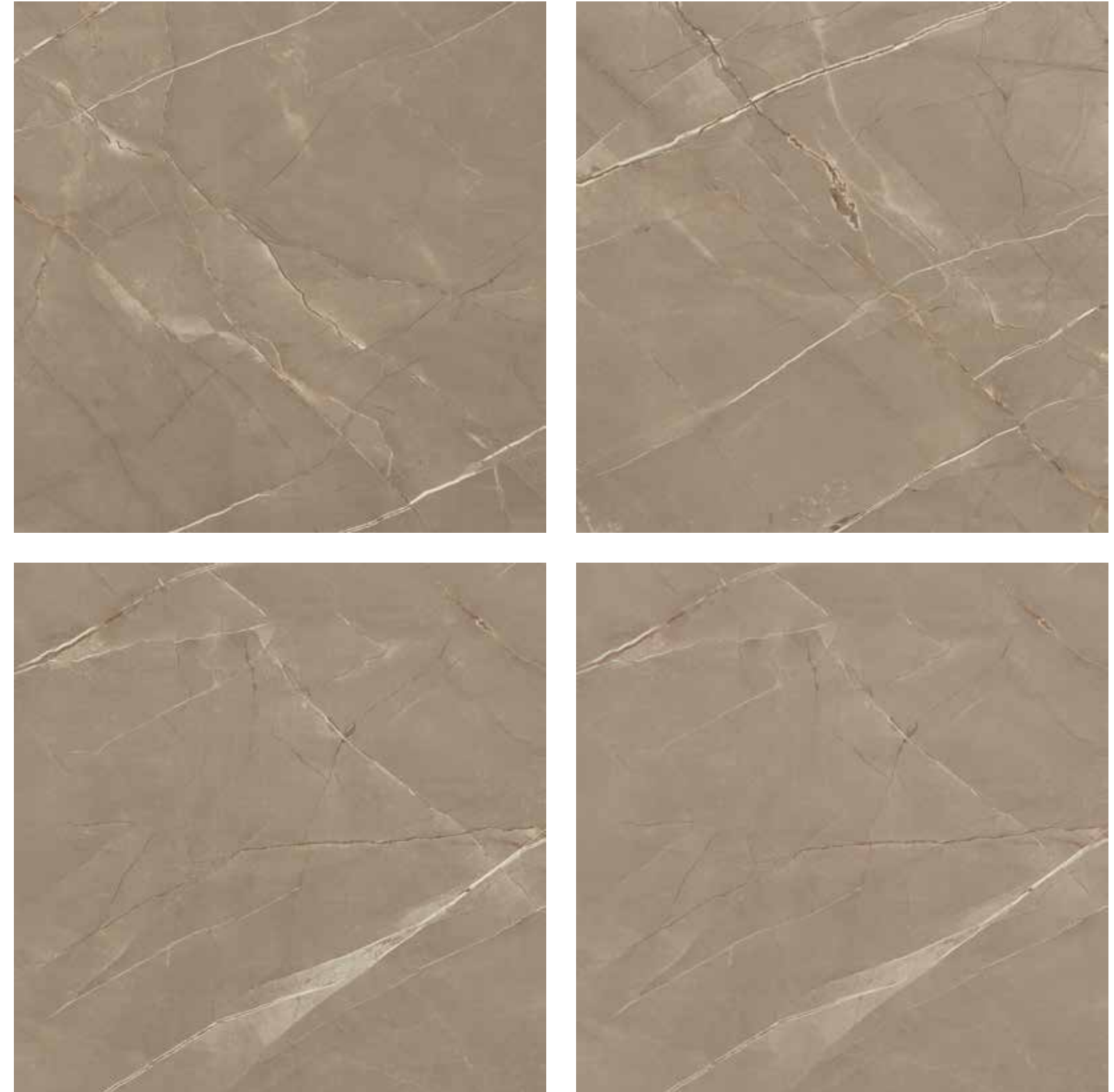
AVAILABLE SIZES (CM)
60x60 | 30x60



M499

FINISH
POLISHED | MATT

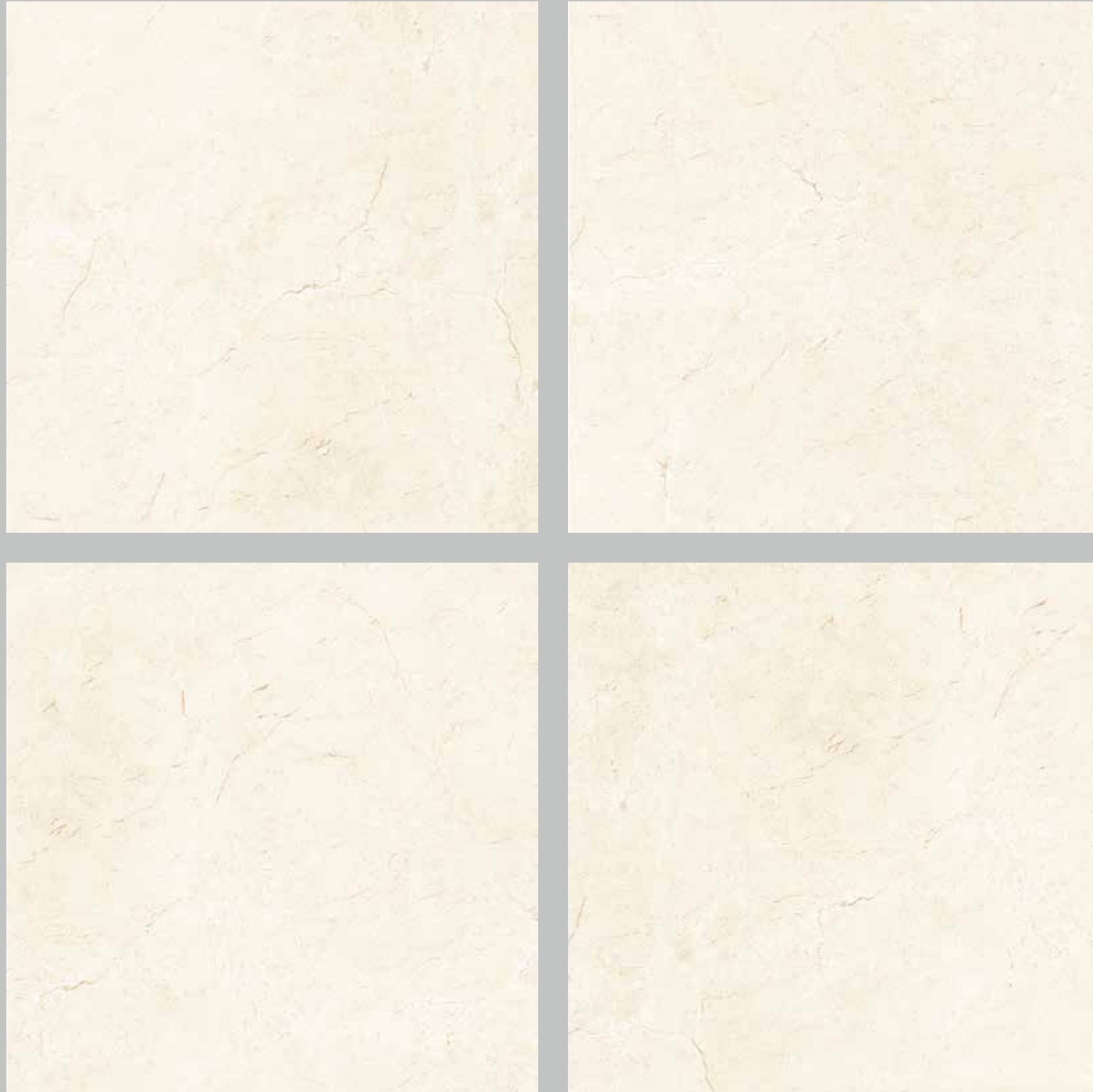
AVAILABLE SIZES (CM)
60x60 | 30x60



M493

FINISH
POLISHED | MATT

AVAILABLE SIZES (CM)
60x60 | 30x60



M422

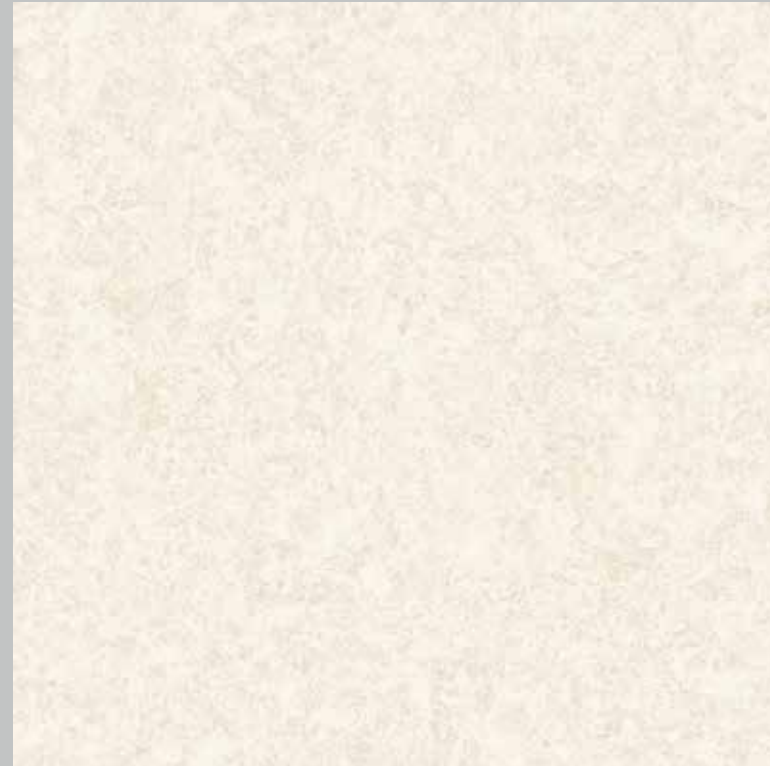
FINISH
POLISHED | MATT

AVAILABLE SIZES (CM)
60x60 | 30x60





M432



M431



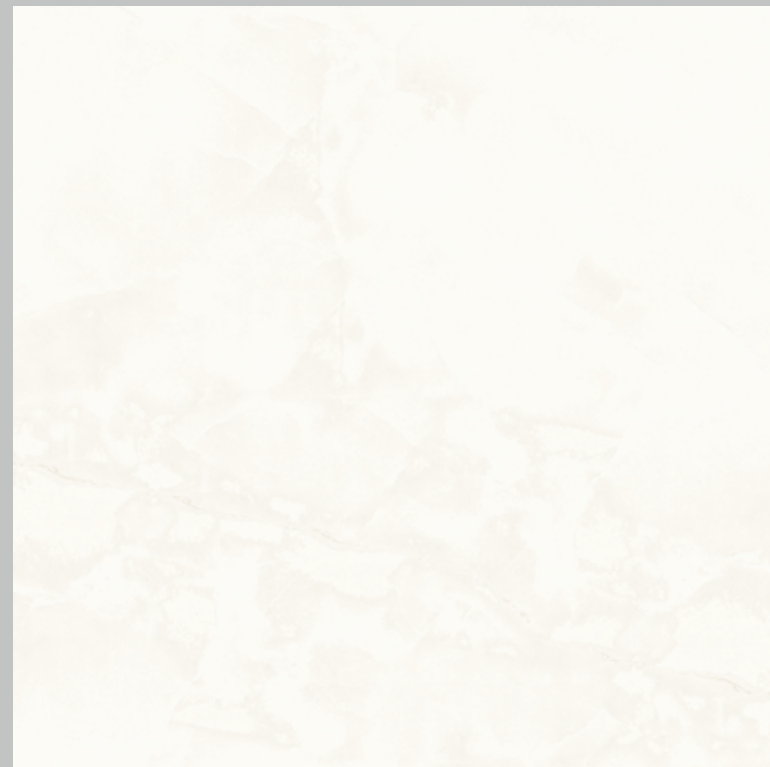
M434



M433



M416



M402



M428



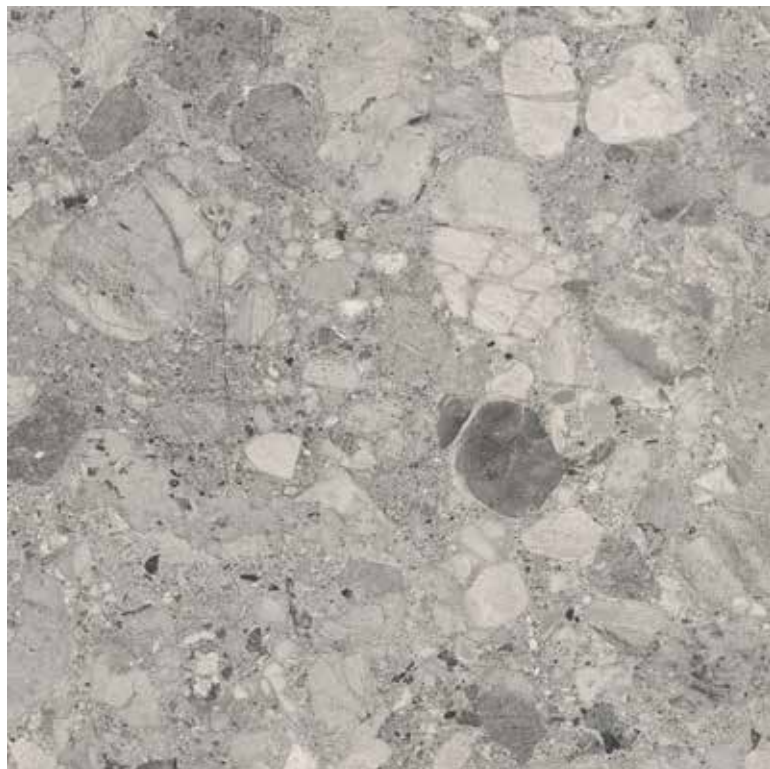
M412

FINISH
POLISHED | MATT

AVAILABLE SIZES (CM)
60x60 | 30x60

FINISH
POLISHED | MATT

AVAILABLE SIZES (CM)
60x60 | 30x60



M436

FINISH
POLISHED | MATT

AVAILABLE SIZES (CM)
60x60 | 30x60



M419

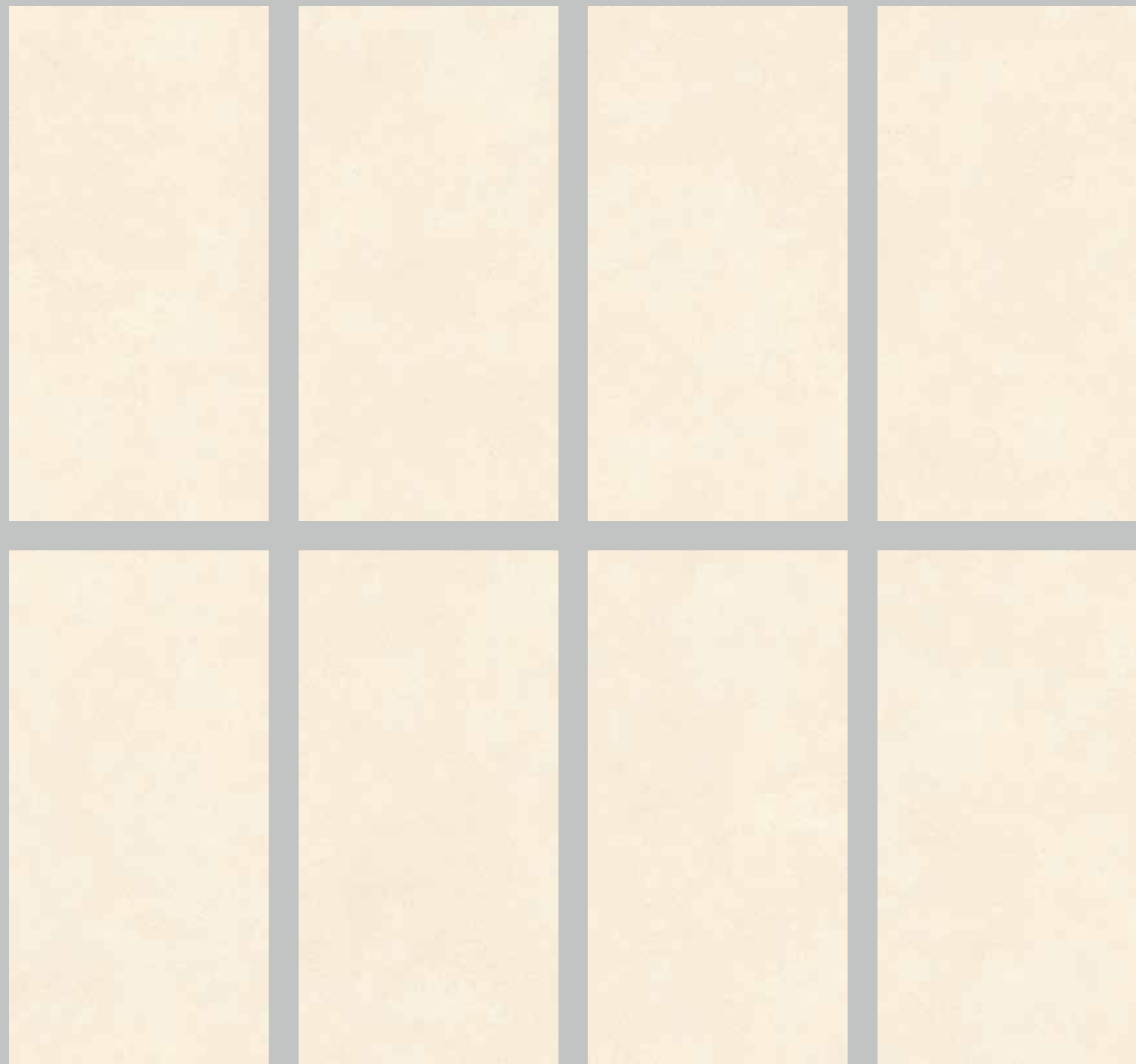
FINISH
POLISHED | MATT

AVAILABLE SIZES (CM)
60x60 | 30x60



CEMENT

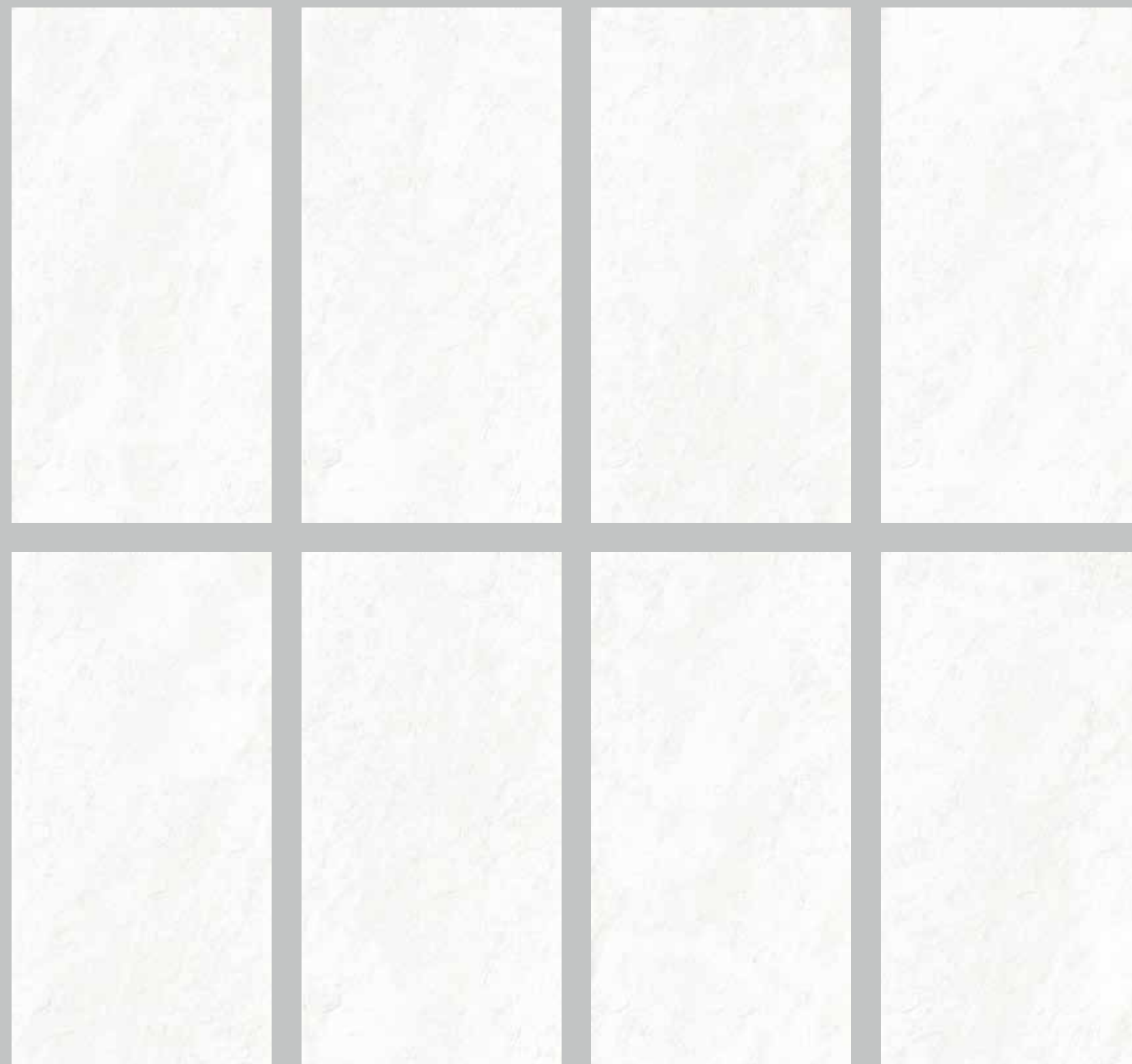
Your Concrete Ideas



E272

FINISH
MATT | POLISHED

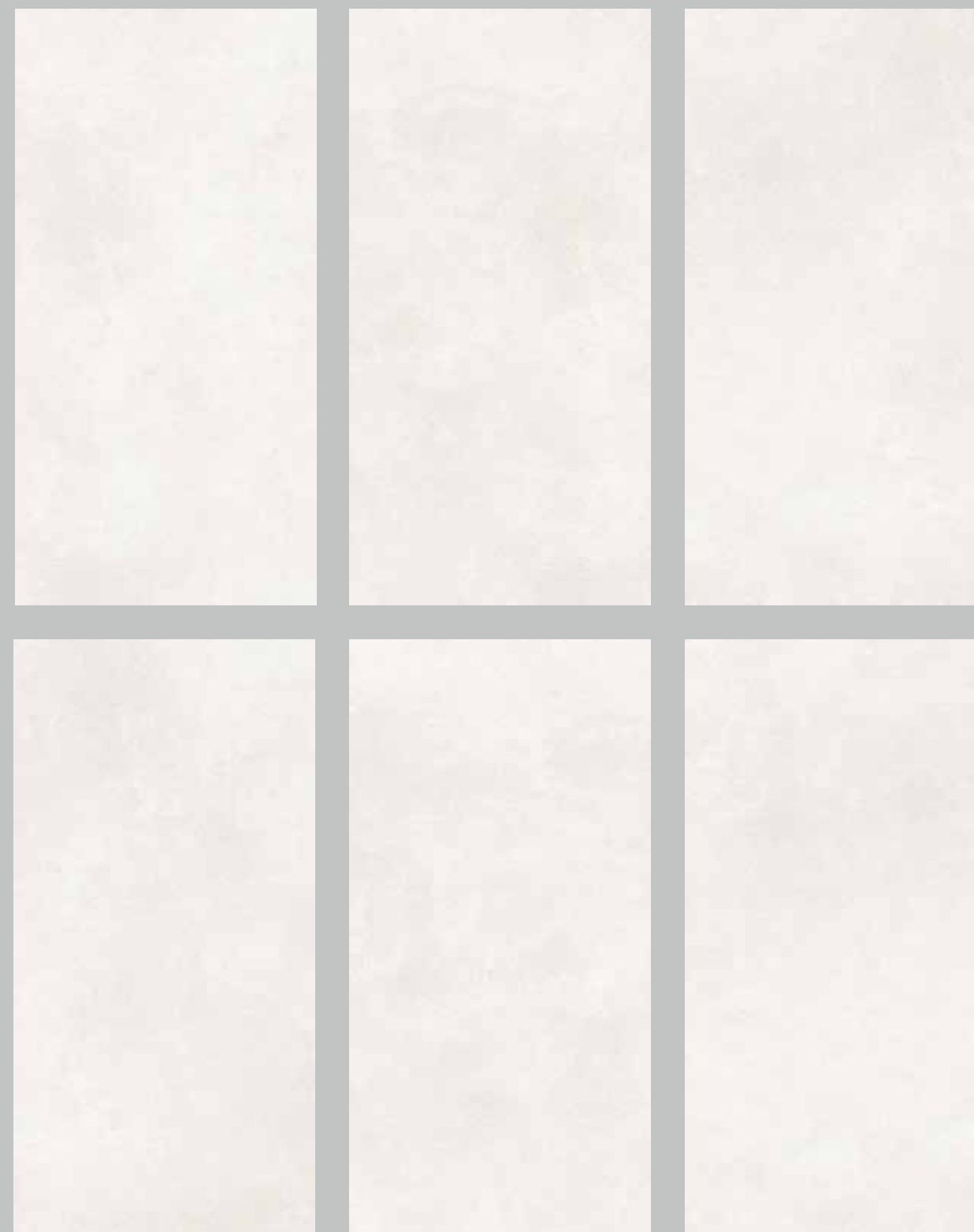
AVAILABLE SIZES (CM)
60x120 | 60x60 | 30x60 | 30x30



E2D4

FINISH
MATT | POLISHED

AVAILABLE SIZES (CM)
60x120 | 60x60 | 30x60 | 30x30



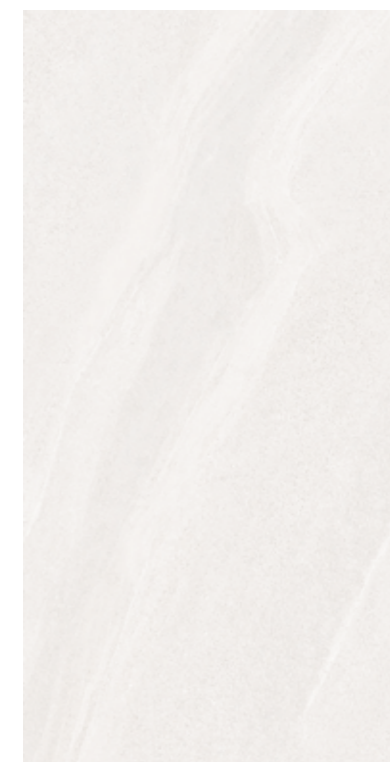
E2B8

FINISH
MATT | POLISHED

AVAILABLE SIZES (CM)
60x120 | 60x60 | 30x60 | 30x30



E229



E2D5

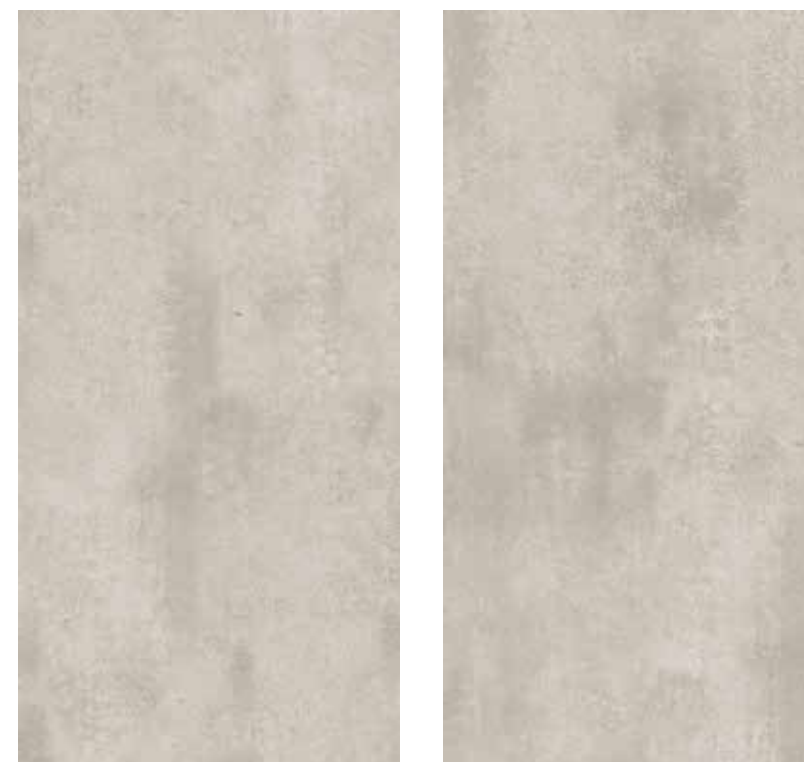
FINISH
MATT | POLISHED

AVAILABLE SIZES (CM)
60x120 | 60x60 | 30x60 | 30x30



Grannitto

CEMENT
PORCELAIN | GLAZED



E213



E206



E228



E210



E221



FINISH
MATT | POLISHED

AVAILABLE SIZES (CM)
60x120 | 60x60 | 30x60 | 30x30



E258



E253



E200



E259

FINISH
MATT | POLISHED

AVAILABLE SIZES (CM)
60x60 | 30x60 | 30x30



E252



E251



E254



E255



CEMENT
PORCELAIN | GLAZED

FINISH
MATT | POLISHED

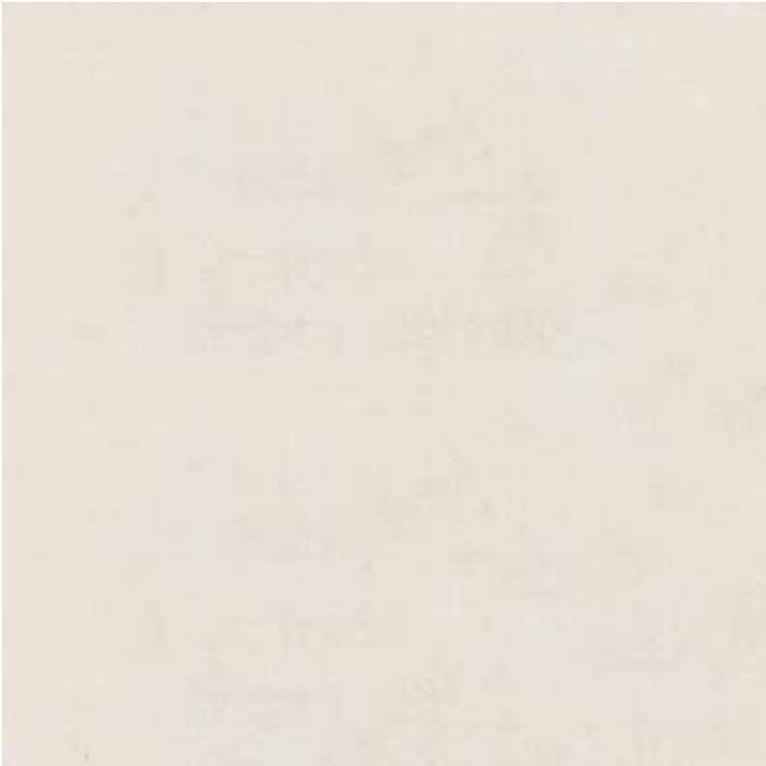
AVAILABLE SIZES (CM)
60x60 | 30x60 | 30x30



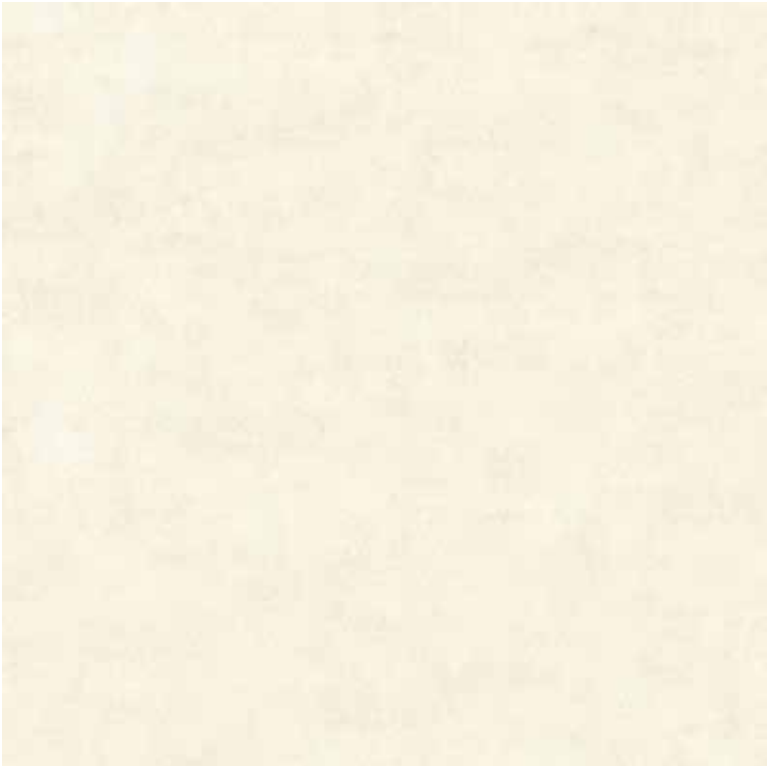
E214



E232



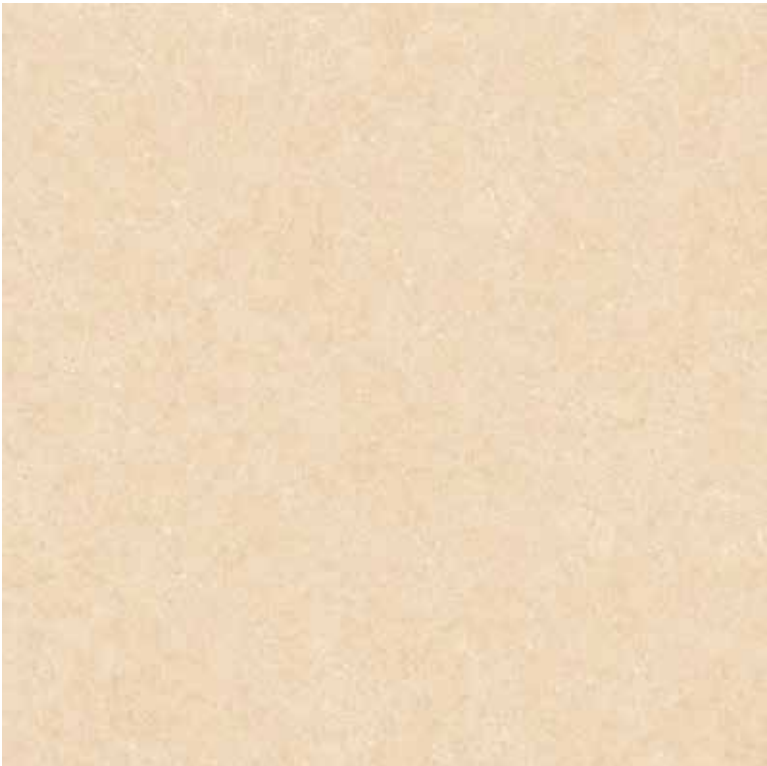
E238



E250



E231



E283



E220



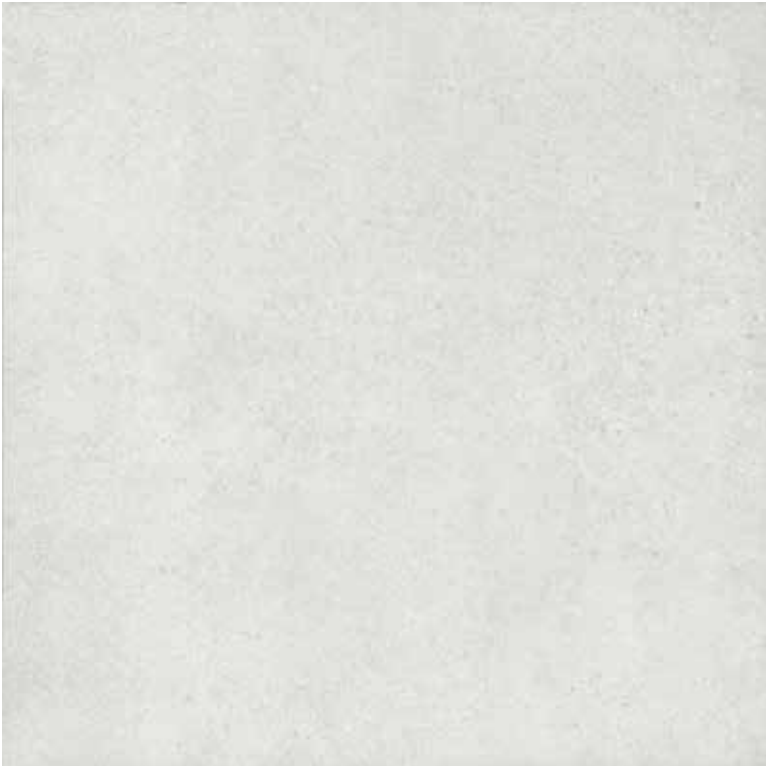
E212

FINISH
MATT | POLISHED

AVAILABLE SIZES (CM)
60x60 | 30x60 | 30x30

FINISH
MATT | POLISHED

AVAILABLE SIZES (CM)
60x60 | 30x60 | 30x30



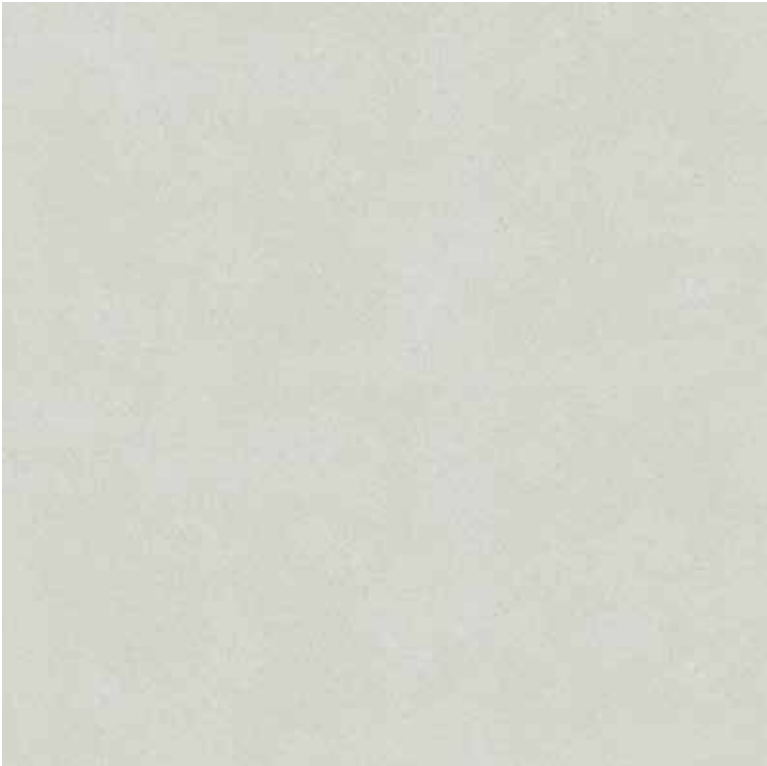
E204



E284



E234



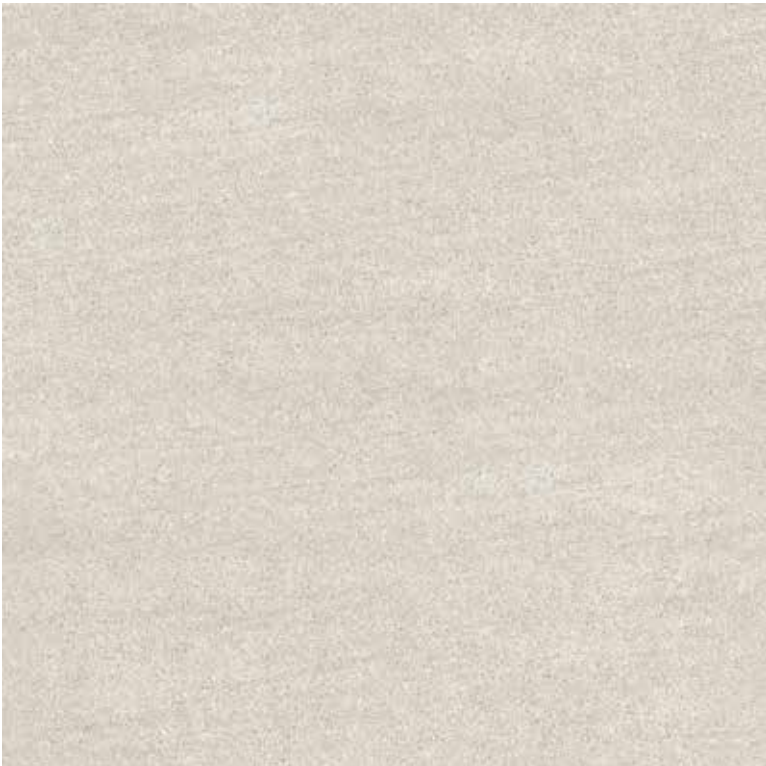
E209



E201



E217



E211



E207

FINISH
MATT | POLISHED

AVAILABLE SIZES (CM)
60x60 | 30x60 | 30x30

FINISH
MATT | POLISHED

AVAILABLE SIZES (CM)
60x60 | 30x60 | 30x30



TIMBER

We Save Forests



T104



T101



T106



T115

FINISH
MATT

AVAILABLE SIZES (CM)
60X120 | 20X120 | 60X60 | 15X60

FINISH
MATT

AVAILABLE SIZES (CM)
60X120 | 20X120 | 60X60 | 15X60



T190

T102



T100



T120



T107



T136

FINISH
MATT

AVAILABLE SIZES (CM)
60X120 | 20X120 | 60X60 | 15X60

FINISH
MATT

AVAILABLE SIZES (CM)
60X120 | 20X120 | 60X60 | 15X60



T169



T105

FINISH
MATT

AVAILABLE SIZES (CM)
20X120



DECORE

Life Style Design



D901



D902



D904



D903



D915



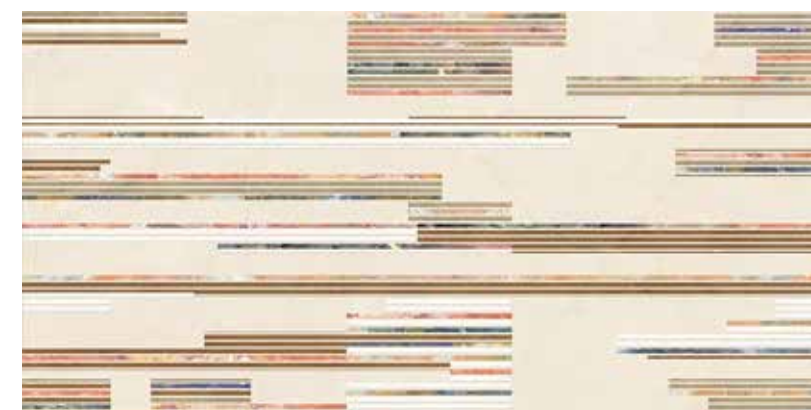
D914

FINISH
MATT

AVAILABLE SIZES (CM)
30x60



D912



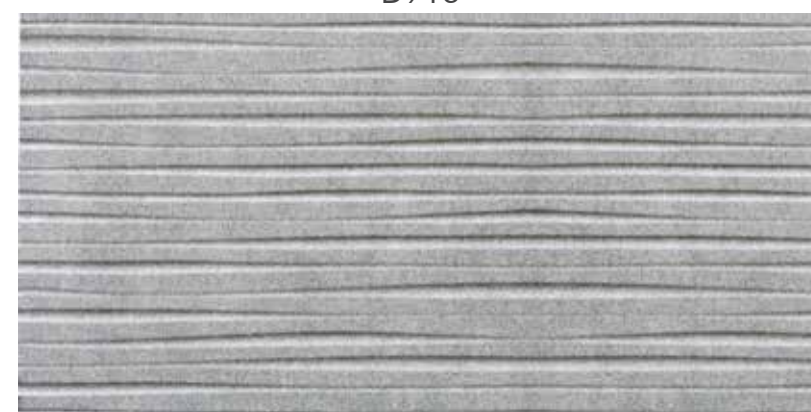
D913



D916



D917



D906



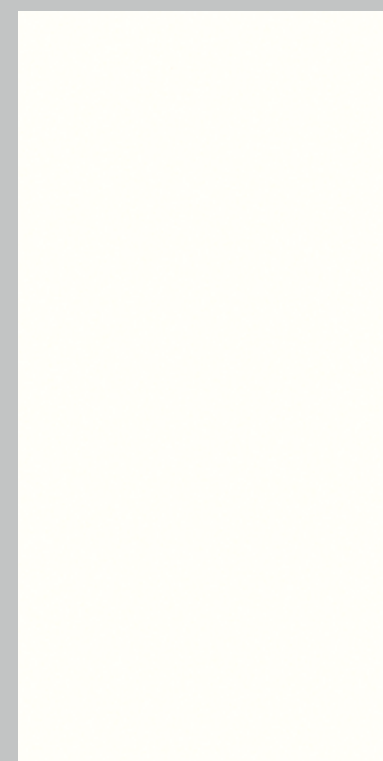
D905

FINISH
MATT

AVAILABLE SIZES (CM)
30x60



COLORE
Colore of Thoughts



R709



R708



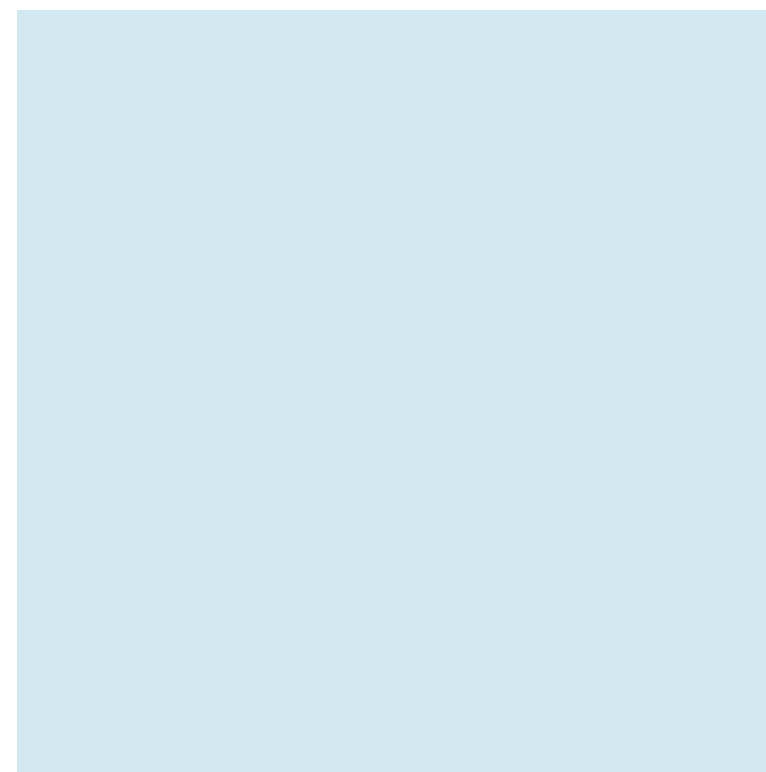
R719



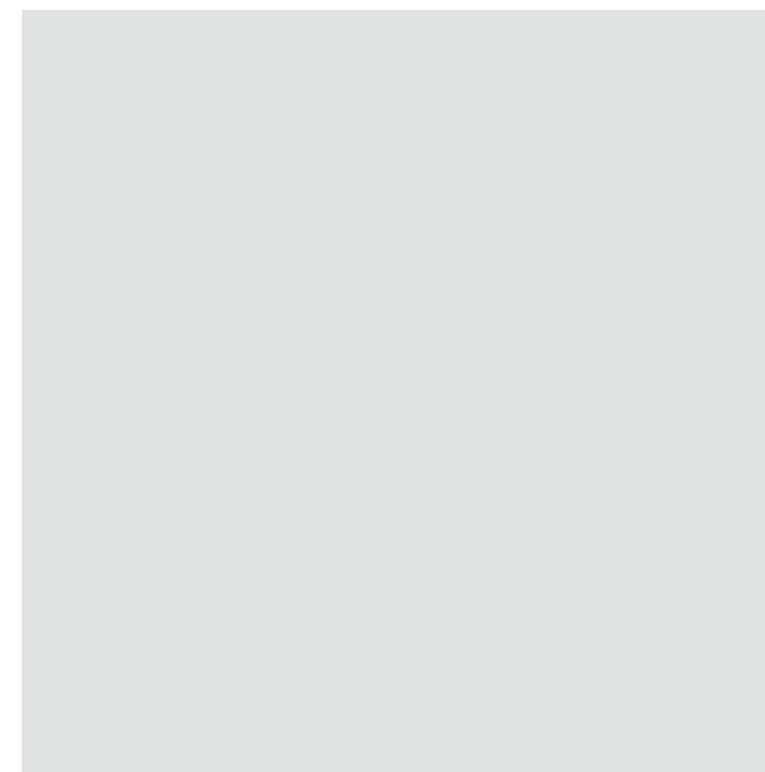
R710

FINISH
POLISHED | MATT

AVAILABLE SIZES (CM)
60x120 | 60x60 | 30x60 | 30x30



R737



R736



R739



R740

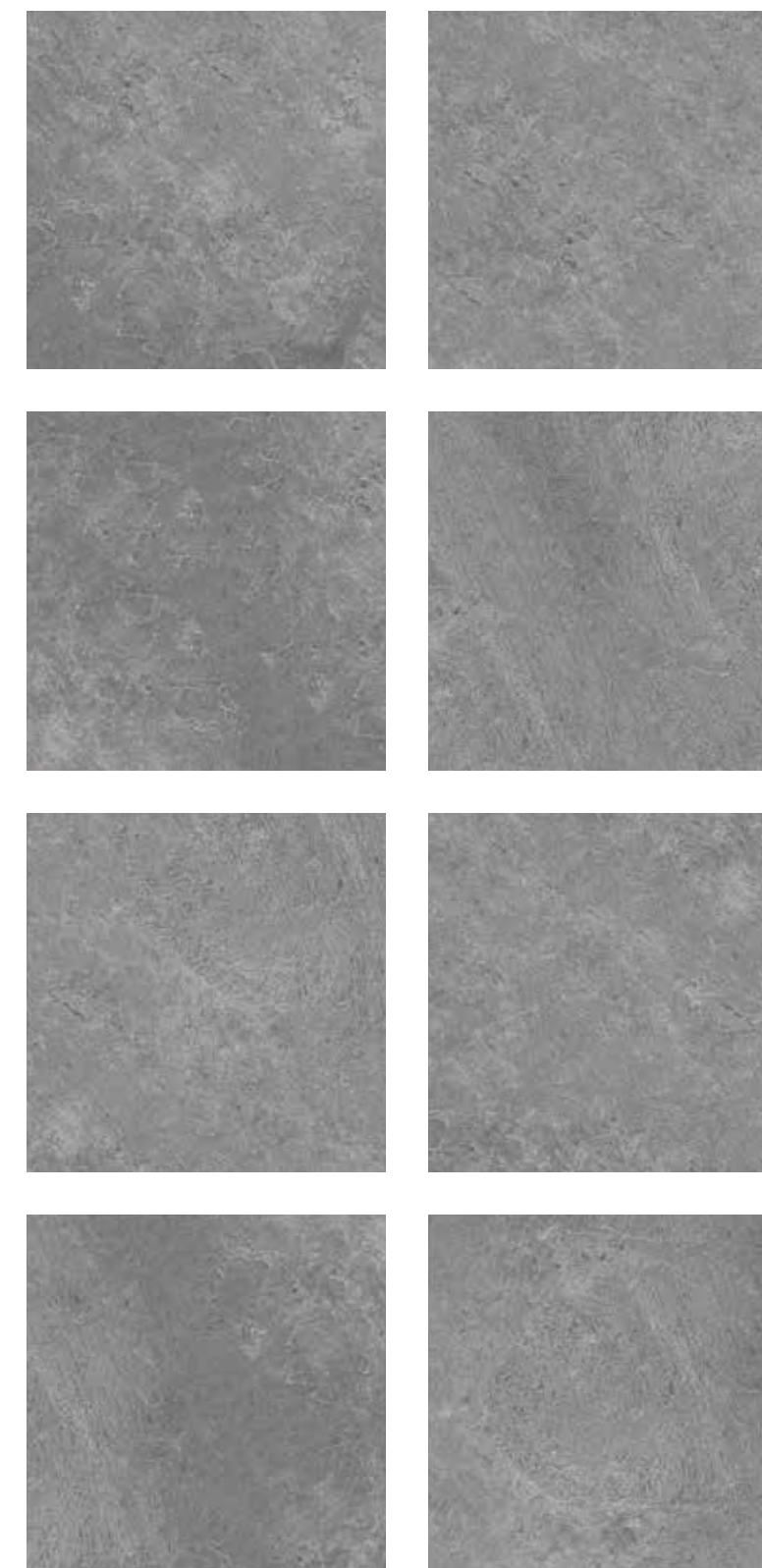
FINISH
MATT

AVAILABLE SIZES (CM)
60x60

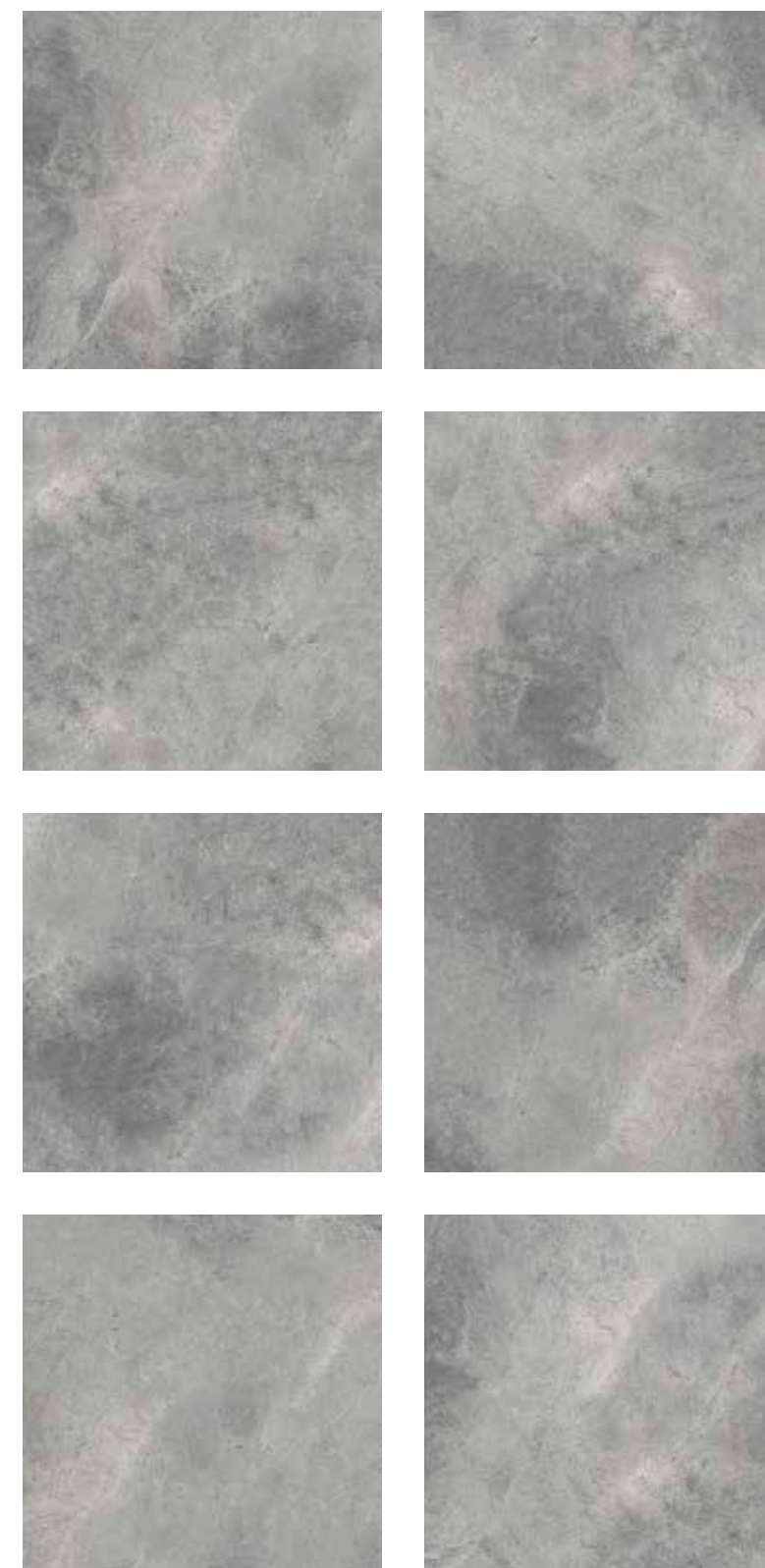


HEAVY DUTY

Strong Design



H521



H522

FINISH
RUSTIC

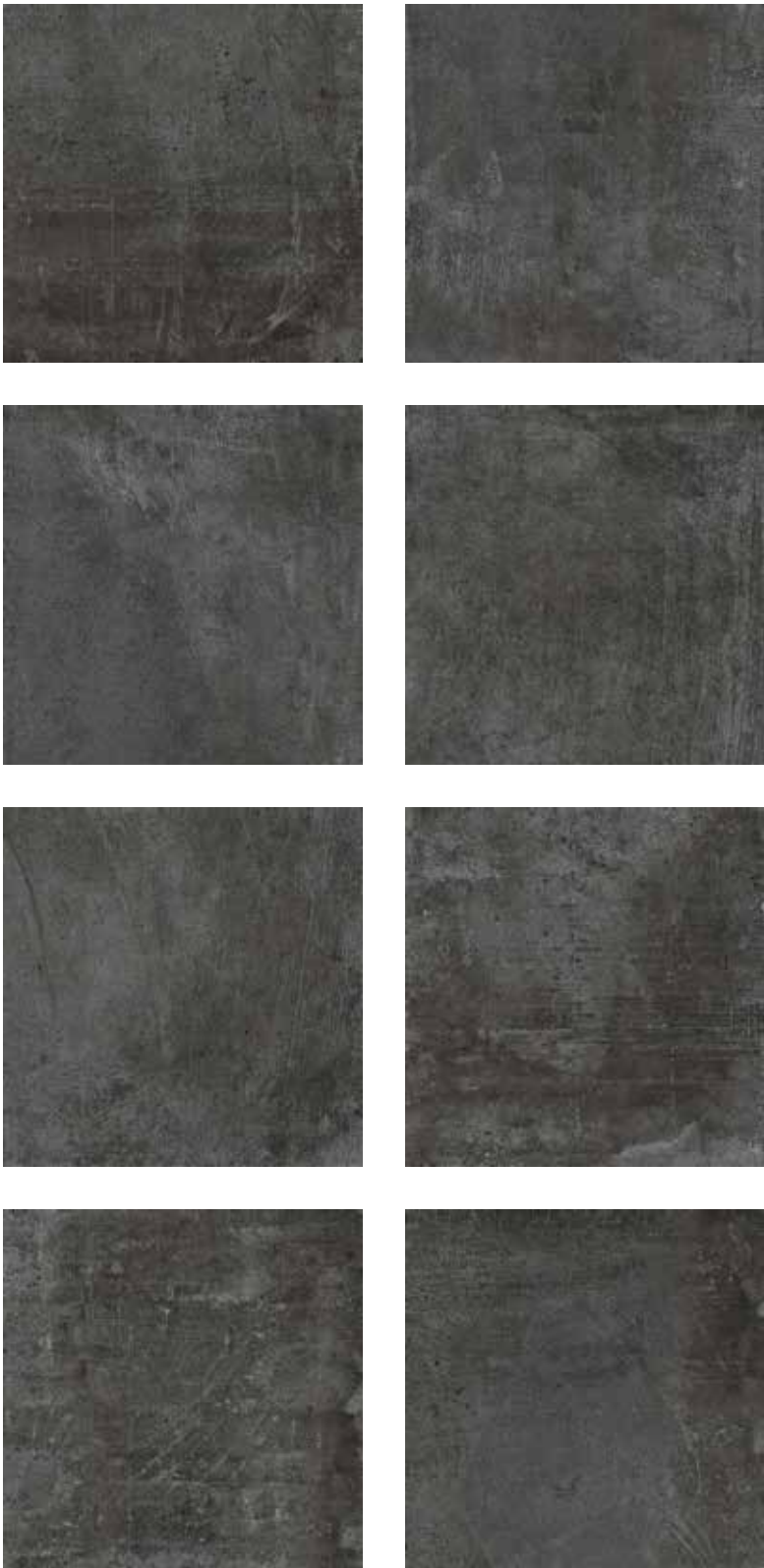
AVAILABLE SIZES (CM)
60x60 | 30x60 | 30x30



H523

FINISH
RUSTIC

AVAILABLE SIZES (CM)
60x60 | 30x60 | 30x30



H530

FINISH
RUSTIC

AVAILABLE SIZES (CM)
60x60 | 30x60 | 30x30



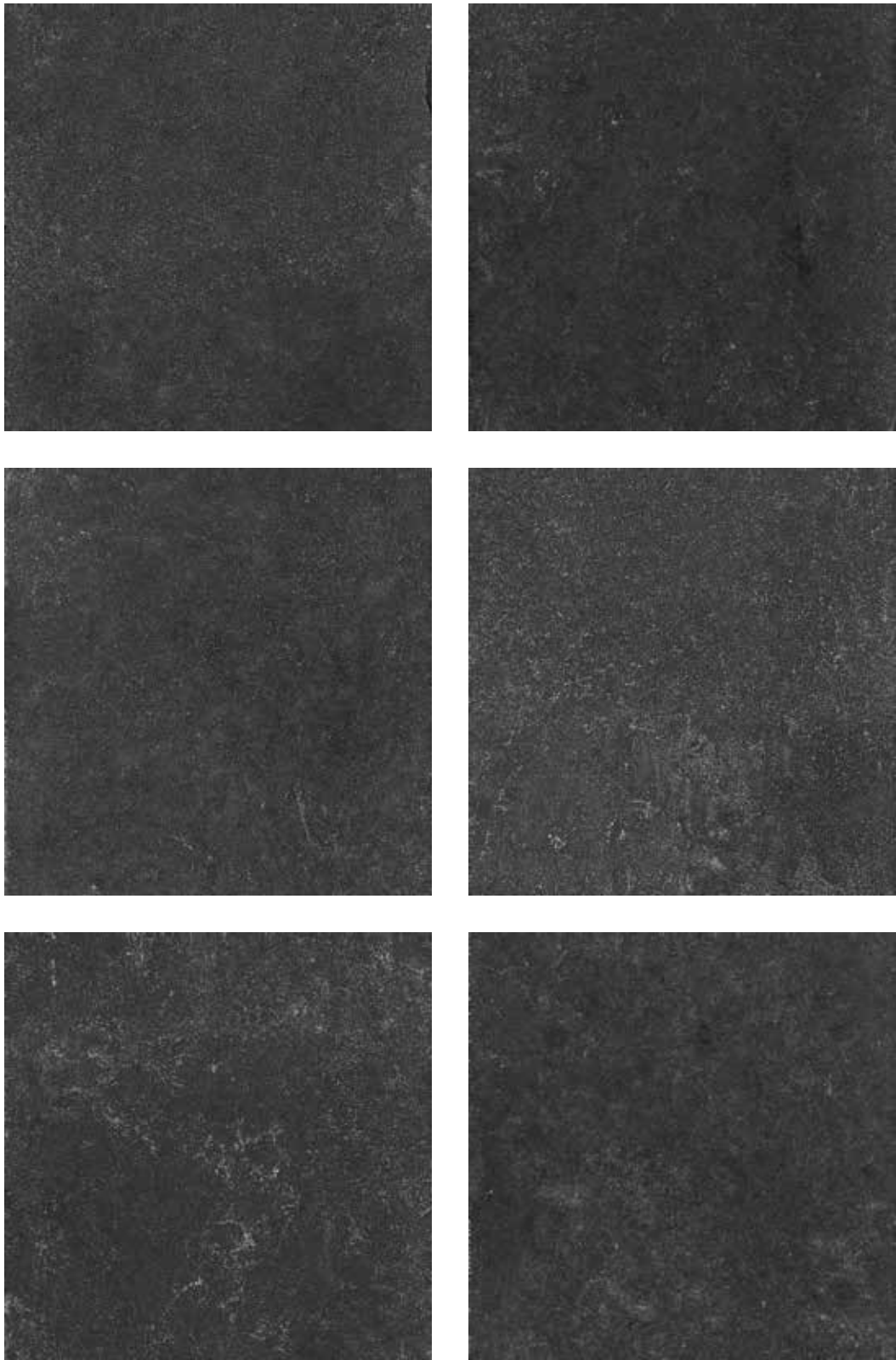
H525

FINISH
RUSTIC

AVAILABLE SIZES (CM)
60x60 | 30x60 | 30x30



H525



H518



H520

FINISH
RUSTIC

AVAILABLE SIZES (CM)
60x60 | 30x60 | 30x30

FINISH
RUSTIC

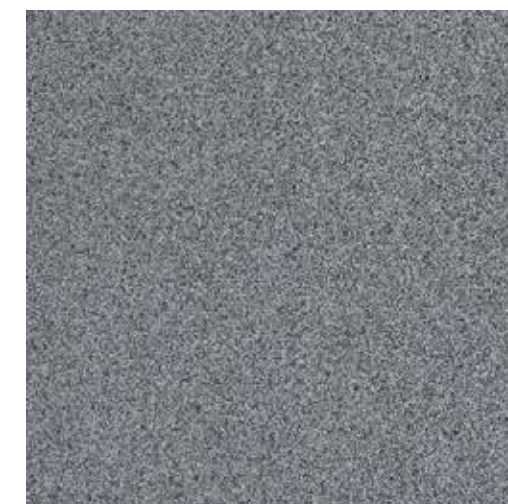
AVAILABLE SIZES (CM)
60x60 | 30x60 | 30x30



H513



H510



H515



H516



H511



H528

FINISH
RUSTIC

AVAILABLE SIZES (CM)
60x60 | 30x60 | 30x30

TILE CALCULATION

When taking on any tiling project it is important to first calculate how many tiles you're going to need to complete the job. Whether it's for walls or floors, large or small spaces. It is a quick and easy way to determine the cost and help you stay within your budget. A few hints and tips on how to do this.

Before You Start

You should have a clear idea of the size and shape of the area you want to tile and how it's going to be used. It's helpful to first draw your area on paper. For example, two walls and one floor. Then, determine if the tiles are to cover the whole area or part of the area and mark the area to be covered.

Make sure you settle on a tiling pattern early like straight, pinwheel or herringbone, and your grout width. Remember to take out the spaces for windows but add in any sills or skirting you plan to tile. Also, think about the fixed accessories you want to be incorporated within your tiling. Plus, you should always order an extra 10 to 15% because even if you don't use them for the project, they may come in handy at a later date.

1. Take Area Measurements

If it's a floor you're tiling, use a measuring tape to measure the length of one side of the room and then the width of another side of the room. For walls, measure the length of the wall up and down and the width left to right.

2. Multiply Your Measurements

Multiply the length and width measurements you obtained, which will give you the total square meterage of the wall and/or floor areas. So, if the wall or floor measures 5m long by 4m wide, multiply 5 by 4 and your calculation will be 20 square meters. Do this for each wall or floor area you need tiled, and then add all of the numbers together.

3. Calculate The Coverage

So now you have the square meterage, but it's important to buy more tiles than you need to cover the space as you should factor in cuts, waste and breaks. The extra tiles will also help if your supplier runs out of stock mid-project. Multiply the square meterage you have by 15%, this will be the actual amount of square meterage you should buy tiles for.

4. Work Out The Amount Of Tiles

Tiles usually come in boxes with their amount labeled, they divide the total square meterage required by the total square meterage of the tiles in the box. For example, if the room is 120 square meters and each box has 10 square meters of tile inside, then you'll need 12 boxes.

Recommendation : Use spacers between tiles, we do not recommend zero joint fixing.

5. Get Tiling

Check out the full range of tiles available on our website at www.alkhaleejceramics.com

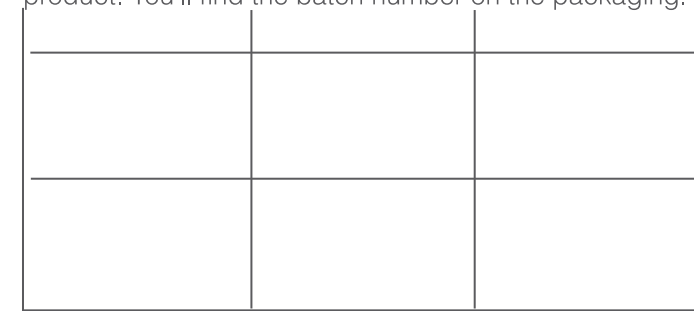
PATTERN

CREATING A PATTERN

If this is your first-time tiler, don't be put off by some of the more involved patterns. Just give yourself plenty of time to layout the design carefully and you'll find that these patterns are achievable.

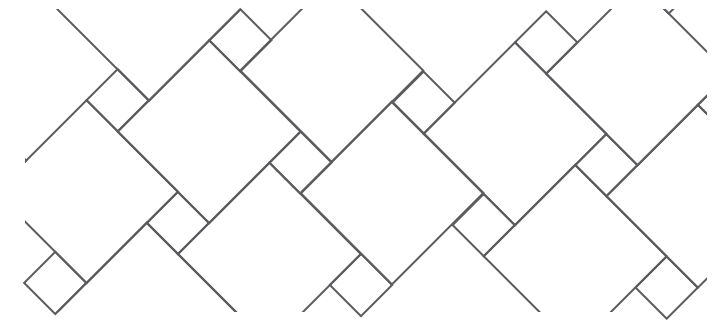
Straight (Stack Bond)

The most common and simplest tiling pattern. The tiles are laid in straight lines so that grout lines end up like a grid. A great tip when buying your tiles is to make sure that they all have the same batch number. Different batches may have slight color variations that will show up in the finished product. You'll find the batch number on the packaging.



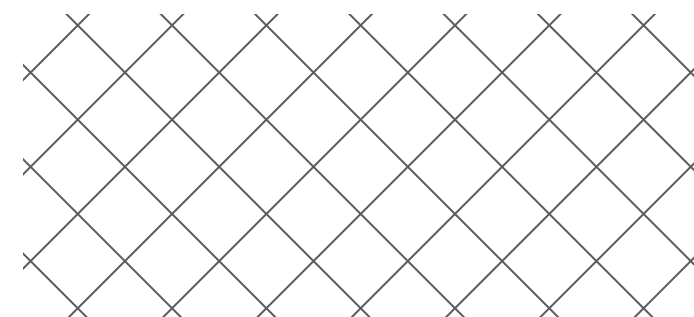
Pinwheel

Similar to the windmill, this design uses a small square tile surrounded by much larger square tiles to create the effect of a spinning pinwheel. Tiles in contrasting colors (TACO) should be chosen for the best effect.



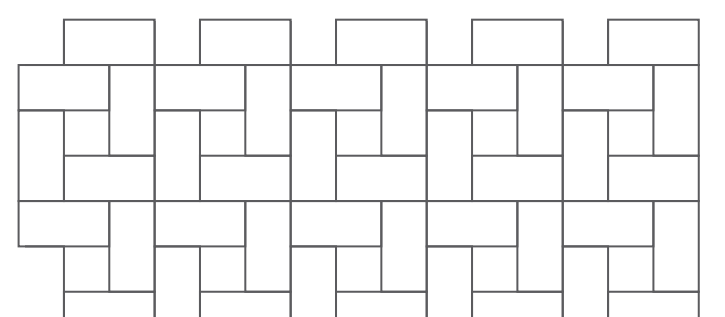
Diagonal

Diagonal is similar to the straight pattern except the tiles are laid on a 45 degree angle, turning the tiles into diamonds. This style can be used with a border as a feature in a kitchen splashback or for an entire floor to make a small room bigger. It's perfect for the bathroom.



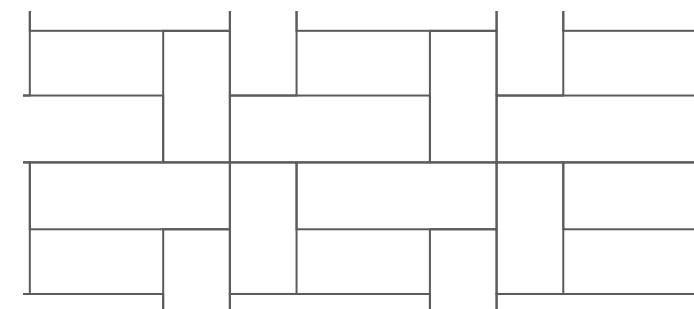
Windmill

To create windmill pattern, four rectangular tiles are arranged around a square tile in the center. Using a square tile and grout in a contrasting color to the rectangles really make this pattern stand out. It can look busy on a floor but is good for a shower or as a border.



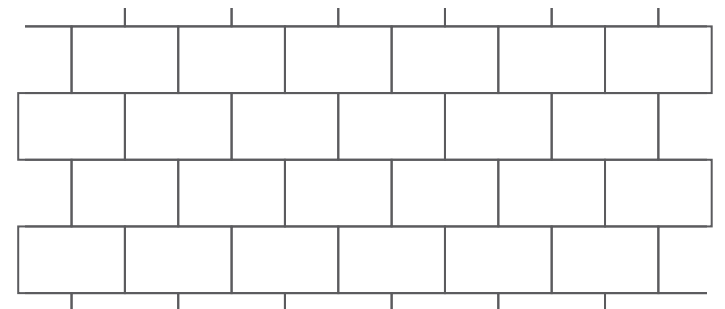
Herringbone

Perfect for hallways or outdoor paths, as the 'V' in the pattern acts like arrows pointing you in the right direction, the herringbone pattern is achieved by laying rectangular tiles in a zig-zag pattern.



Stretcher Bond

Stretcher bond uses square or rectangular tiles that are laid like bricks in a wall. The end of each tile is lined up with the center of the tiles that are both directly above and below it. This creates a staggered but cohesive look.



MAINTENANCE

The inherent technical characterstics of Tiles ensure that they will be relatively easy to maintain and should provide years of enjoyment. Most of the general purpose cleaning solutions that are available in the market can be used for cleaning the tiles, but it has to be ensured that it should be a non-oil, non-animal fat base. The cleaning components can leave behind an invisible residue, which can trap dirt. Hence, ensure that the tile is cleaned by a cleaning solution by through rising followed by wet vacuuming.

The General Cleaning steps can be summarized as follows:














- Remove all loose debris from the tile by sweeping with a soft bristle broom or vacuuming.
Any accidental spill should be wiped up as quickly as possible
- Apply the multi-purpose cleaner, in recommended dilution as per manufacturer of the cleaning solution.
- Allow the multi-purpose cleaner to remain on the tile for about 5 minutes.
- Wipe or mop with a non-abrasive mop or cloth
- Remove the dirty cleaning solution and water with a wet vacuum or a mop.
- Rinse with water to remove residual cleaning solution on the tile.

It is absolutely essential that all detergent residues to be completely removed from the tile as any residual remains can dry on the tiles and form a coating, which can trap dirt and be very difficult to remove. The tile should be rinsed several times, if necessary, to remove all detergent residues.

The frequency and timing of any maintenance program are dependent on the specific characterestics of each tile applica- tion. Factors such as foot traffic, environmental conditions and product color should be considered when planning your maintenance schedule.



PORCELAIN TILES - TECHNICAL SPECIFICATIONS

| TEST DESCRIPTION | | STANDARD TEST METHOD | INTERNATIONAL STANDARD ISO 13006 : 2018 | AL KHALEEJ CERAMICS SPECIFICATIONS |
|---|--|----------------------|---|------------------------------------|
|  | Deviation in Length & Width | BS EN ISO 10545 – 2 | ± 0.3 % | ± 0.2 % |
|  | Deviation in Thickness | BS EN ISO 10545 – 2 | ± 5.0 % | ± 5.0 % |
|  | Straightness of Sides | BS EN ISO 10545 – 2 | ± 0.3 % | ± 0.2 % |
|  | Rectangularity (mm) | BS EN ISO 10545 – 2 | ± 0.3 % | ± 0.25 % |
|  | Surface flatness | BS EN ISO 10545 – 2 | ± 0.4 % | ± 0.3 % |
|  | Water Absorption | BS EN ISO 10545 – 3 | EV ≤ 0.50% | ≤ 0.5% |
| | Breaking Strength | BS EN ISO 10545 – 4 | ≥ 1300 N | ≥ 1400 N |
|  | Modules Of Rupture | BS EN ISO 10545 – 4 | ≥ 35 N/mm² | ≥ 35 N/mm² |
|  | Resistance to Deep Abrasion | BS EN ISO 10545 - 6 | ≤ 175mm ³ | ≤ 150mm ³ |
|  | Resistance to surface Abrasion for glazed tiles | BS EN ISO 10545 - 7 | Report Abrasio Class | PEI 2 - 4 |
| | Co Efficient Of Linear Thermal Expansion | BS EN ISO 10545 – 8 | Test method Available | ≤ 7 x 10 ⁻⁷ / C |
| | Thermal Shock Resistance | BS EN ISO 10545 – 9 | Teest Method Available | No visible defect |
|  | Frost Resistance | BS EN ISO 10545 – 12 | Required | No visible damage |
|  | Resistance to House hold Chemicals & swimming pool Salts | BS EN ISO 10545 – 13 | Minimum B | Class A No visible effect |
|  | Resistance to acids & alkalis(with exceptions of HF acid and it's compounds) | BS EN ISO 10545 – 13 | Manufacturer to State Classification | Class LA No visible effect |
|  | Resistance To Staining | BS EN ISO 10545 – 14 | Min Class - 3 | Min Class -4 Stain removed |

